



Reliable Traceability

LiveTrack Reader

ISO Compliant Reader

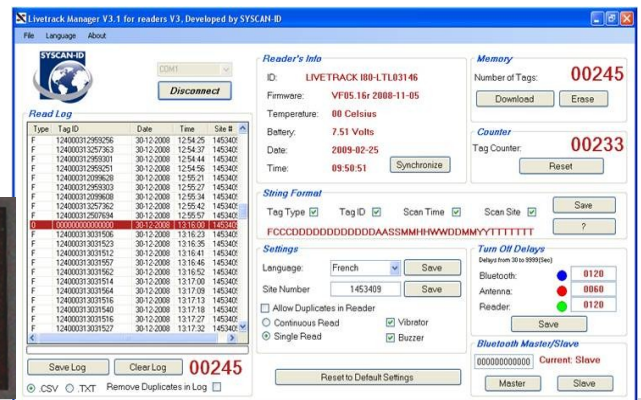
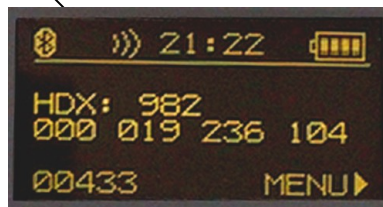
Used globally, the LiveTrack® reader is the most advanced and affordable ISO livestock hand held wand reader. With a memory of up to 15,000 RFID tags, it improves performance and lowers overhead while processing livestock in the field. Conceived with the help of cattlemen and other livestock professionals the LiveTrack® reader is **robust and easy to use**, making it an ideal solution for producers, transporters, feedlots, auction houses, sales yards and veterinarians.

LiveTrack Reader Advantages

- Simple, Easy, and Reliable Bluetooth communication
- ISO 11784 and ISO 11785 Compliance
- Light weight, ergonomic design
- Rugged construction
- IP66 Water proof / Air tight
- Print Function (Industry First)
- Easy to read graphic display
- 5 button key pad for easy menu navigation
- Extremely fast read rate
- Languages: English, Spanish, French, and German
- Vibrating handle and sound
- LiveTrack Manager software (Out of the box EID solution)
- Compatible with most popular Cattle Management Software's
- Compatible with most popular Scales
- Custom Firmware Available (For unique applications)



Graphic Display



Reseller Info



Reliable Traceability

LiveTrack Reader

ISO Compliant Reader

Custom Firmware is available.

Technical Data

Case:	Polycarbonate ABS
Operating Frequency:	134.2 kHz, 125.0 kHz
RFID Compatibility:	ISO HDX, ISO FDX-B, Industrial HDX, EM4002
Reading Distance:	25-35 cm, 10-14 Inches
Memory:	15, 000 tags
Communication Ports:	Serial RS232 or optional Bluetooth (Class1, 100m)
Battery Power:	7.4V Li-ion rechargeable
Power Input:	12 VDC for charging the battery
Protection Class:	IP 66
Dimensions:	65 X 10 X 3cm or 24 x 4 x 1.2"
Weight:	0.7 kg or 1.5 lbs
Display:	"OLED" 128 x 64 graphic display
Display Languages:	English, French, Spanish, German
Certifications:	IC, FCC, CE, C-Tick

Included in the box: Quick Start Guide, Reader, LiveTrack® Manager Software CD, Manual, Hand Strap, Serial Cable

To Order

LiveTrack LSB (Bluetooth)	Part # SYS-0106-03379
LiveTrack LS (Serial)	Part # SYS-0106-03378

Packaging Specifications

Single Box: (1 Piece)	Dem: 27" L x 8" W x 5" H	Weight: 7 lbs or 3.16Kg
Master Box:(10 Pieces)	Dem: 27" L x 17" W x 23" H	Weight: 63 lbs or 28.5 Kg

Additional Accessories

Vehicle Adapter	Part # SYS-0106-03396
Hard carry case	Part # SYS-CASE
Mobile thermal printer	Part # SYS-05788BP
USB to Serial adapter	Part # SYS-US232

Reseller Info



Made by Syscan-ID Inc.
1975 Hymus Blvd. Dorval, Quebec Canada H9P 1J8

Tel: +1 514-685-7778 www.syscan.com
Fax: +1 514-685-1938 info@syscan-id.com